



NEW EDGE

28.06m | SUNSEEKER | 2019

BEAM
 **6.55m**

DRAFT
 **2.13m**

HULL
 **GRP**

GROSS TONNAGE
 **101**

CREW
 **4**

CRUISING SPEED
 **~18 knots**

MAX SPEED
 **~25 knots**

GUESTS
 **10**

CABINS
 **5**

Description

Striking lines meet open spaces in the wonderful addition to the charter market that is New Edge, 2019 Sunseeker 95. Fully equipped for luxury entertaining, she accommodates up to 10 guests in five stylish and contemporary cabins, with a unique layout that maximises the use of space on board. She features stabilisers both at anchor and underway, ensuring smooth and comfortable cruising at all times.

Stepping onto the aft deck, you are first greeted by an al fresco dining area that comfortably seats up to 10 guests. Below this is the spacious swim platform and tender garage, which is used to store a Zodiac tender, two Seabob F5S and a Sea-Doo Wake Pro. Forward, guests can enjoy the use of a large double sunbed, which has steps down into an additional dining and seating area. This spot is perfect for a little extra privacy when guests wish to dine outside when in port. In addition to these characteristics, New Edge features the Sunseeker 95's wonderful starboard side balcony, which can be accessed and enjoyed via the main saloon, bringing guests closer to the ocean whilst enjoying the indoor amenities.

The flybridge is accessed via stairs on the aft deck and presents another great area for dining and entertainment. The fold out dining table can seat up to 10 guests, and the bar area also has three bar stools. The flybridge controls mirror those of the wheelhouse below. Aft of the bar and dining area there is plenty of space for sunbathing and relaxation and of course magnificent ocean views.

Inside, New Edge's main saloon is accessed via the sliding doors on the aft deck. Once inside guests will be delighted at the amount of natural light that bathes the room thanks to Sunseeker's iconic floor to ceiling windows. The furnishings are neutral and contemporary, with a spacious lounge and seating area with a large TV for entertainment.

Main Information

Builder Sunseeker	Location Summer Turkey Winter Dubai
Model 95	Classification RINA C + Hull, Y Special Navigation
Year Built 2019	Flag Registry Malta

Zodiac tender 400 with 50hp outboard mercury engine

Forward, there is a dining table at which guests can enjoy the chef's gastronomic delights. The fully equipped galley is located forward to port, while the day head is located on the starboard side.

The yacht's master cabin is located forward of the day head and is undoubtedly one of New Edge's standout features. Wonderfully spacious with gorgeous sea views, the cabin makes full use of the yacht's 6.55m beam and overlooks the unique lower level of the cabin. The cabin then extends below, via a smaller staircase. The stairwell features plenty of storage space and a dressing table, before continuing down into the superbly designed ensuite bathroom, complete with a rainfall shower with seating inside to starboard, his and her sinks, and a head to port.

The wheelhouse is located between the flybridge and the main deck, accessed by a small staircase on the main deck, and features a comprehensive range of navigation equipment and a seating area. The flybridge is also accessible from here.

The four ensuite guest cabins are located on the lower deck, comprising of two doubles and two twins with the beds on railings and therefore easily converted into doubles, providing flexibility in the layout depending on each party's requirements. Each cabin also features a TV. New Edge also accommodates up to four crew members in two twin cabins in comfortable quarters, which also has a private mess and galley area.

She has twin MTU engines and has a cruising speed of 18 knots, with a maximum speed of 25 knots.

Speed/Weight

Cruise Speed 18 knots	Max Speed 25 knots
Range 1,490 NM at 12 knots	Fuel Consumption 90l per hour at 12 knots

Accommodation

Guests Sleeping 10	Number of Convertible Beds 4 single that convert
Number of beds 7	Number of cabins 5
Number of King Beds 1	Cabin sizes Master, 2 x Doubles, 2 x Double, 2 x Twin that convert to double all with ensuite
Number of Double Beds 2	Layout of Crew Accommodation 2 x bunk
Number of Single Beds 4 that convert	Crew Mess Yes

Main Equipment

Air Conditioning Air Conditioning Marine Air chilled water system to Tropical specification and with quieter running WhisperCool DC fans	Stabilisers Underway Fitted
Stabilisers at Anchor Fitted	Wifi Fitted with 4G antenna & WIFI router

Audio Visual Equipment

Main Saloon Samsung 55" 4K UHD Television on rise and fall mechanism with a Samsung Blu-ray player. 5:1 system with Sonos Playbar and Sonos Subwoofer. B&W CCM362 rear speakers with Sonos connect Amp. Apple TV. Smart Remote. Auxiliary HDMI Socket.	Crew Mess Samsung 22" Television with Fusion DVD/CD/FM Tuner and Bluetooth function and stereo speakers with Sonos connect.
Master Stateroom Samsung 55" 4K UHD Television. Samsung Blu-ray player. 5:1 system with Sonos Playbar and Sonos Subwoofer. B&W CCM362 rear speakers with Sonos connect Amp. Apple TV. Smart Remote. Auxiliary HDMI Socket.	Misc For each of the two crew cabins and the pilot house a Fusion CD/FM Tuner with Bluetooth function and stereo speakers. Aft Cockpit zone performance audio upgrade with Four Sonance Extreme Speakers with Sonos Connect and amplifier. Flybridge zone performance audio upgrade with Eight Sonance Extreme Speakers with Sonos Connect and amplifier. Fore deck zone performance audio upgrade with Two Sonance Extreme Speakers with Sonos Connect and amplifier. The exterior zoning audio to be linked to the Saloon AV system via Sonos with a tablet to control the zones.
Port and Starboard Double guest cabins Samsung 32" HD Television. Samsung Blu-ray player with Sonos Beam soundbar and Sonos Subwoofer. Apple TV, Auxiliary HDMI Socket.	
Port and Starboard Twin guest cabins Samsung 32" HD Television. Samsung Blu-ray player with Sonos Beam soundbar and Sonos Subwoofer. Apple TV, Auxiliary HDMI Socket.	



















Aftdeck Seating



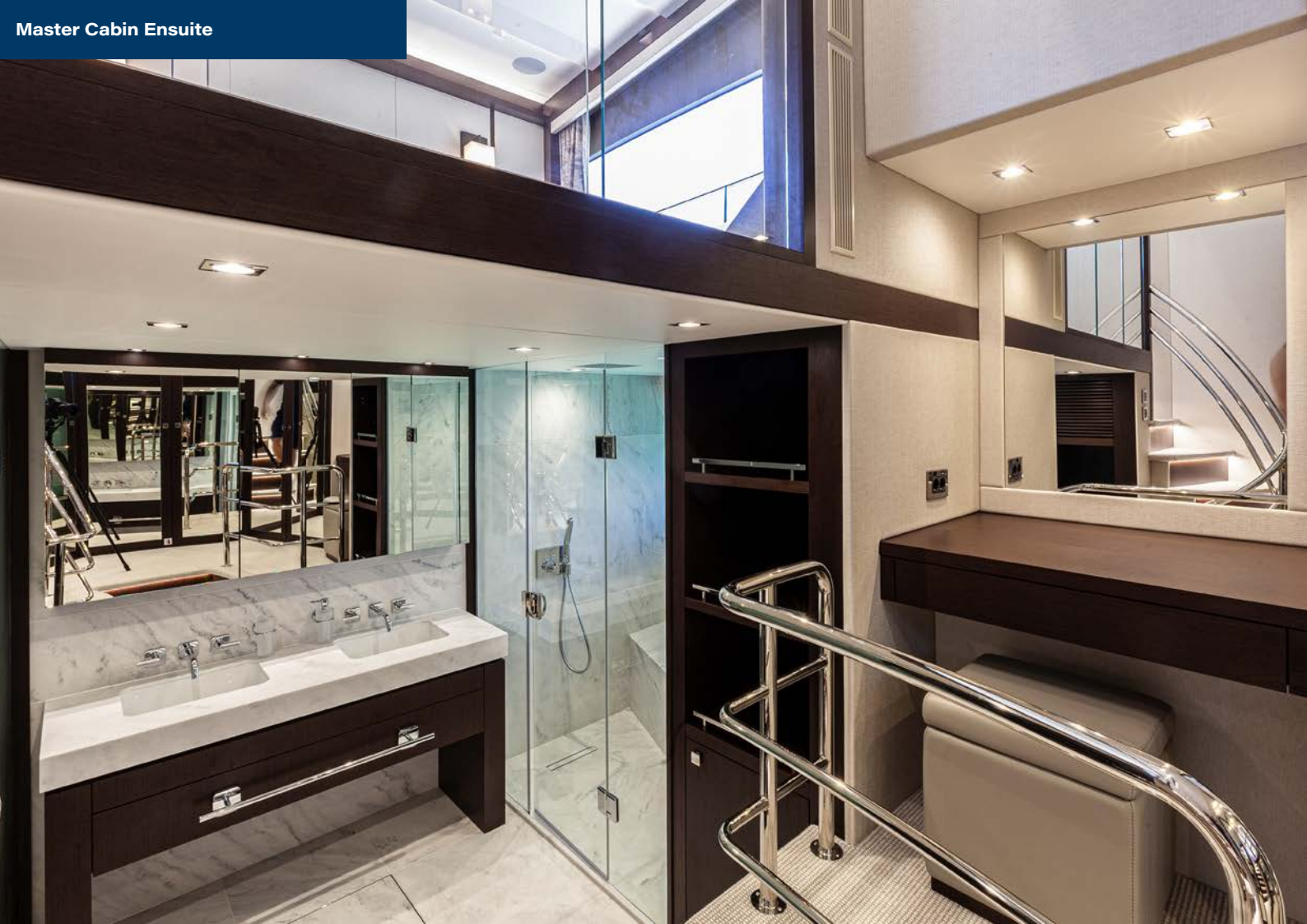








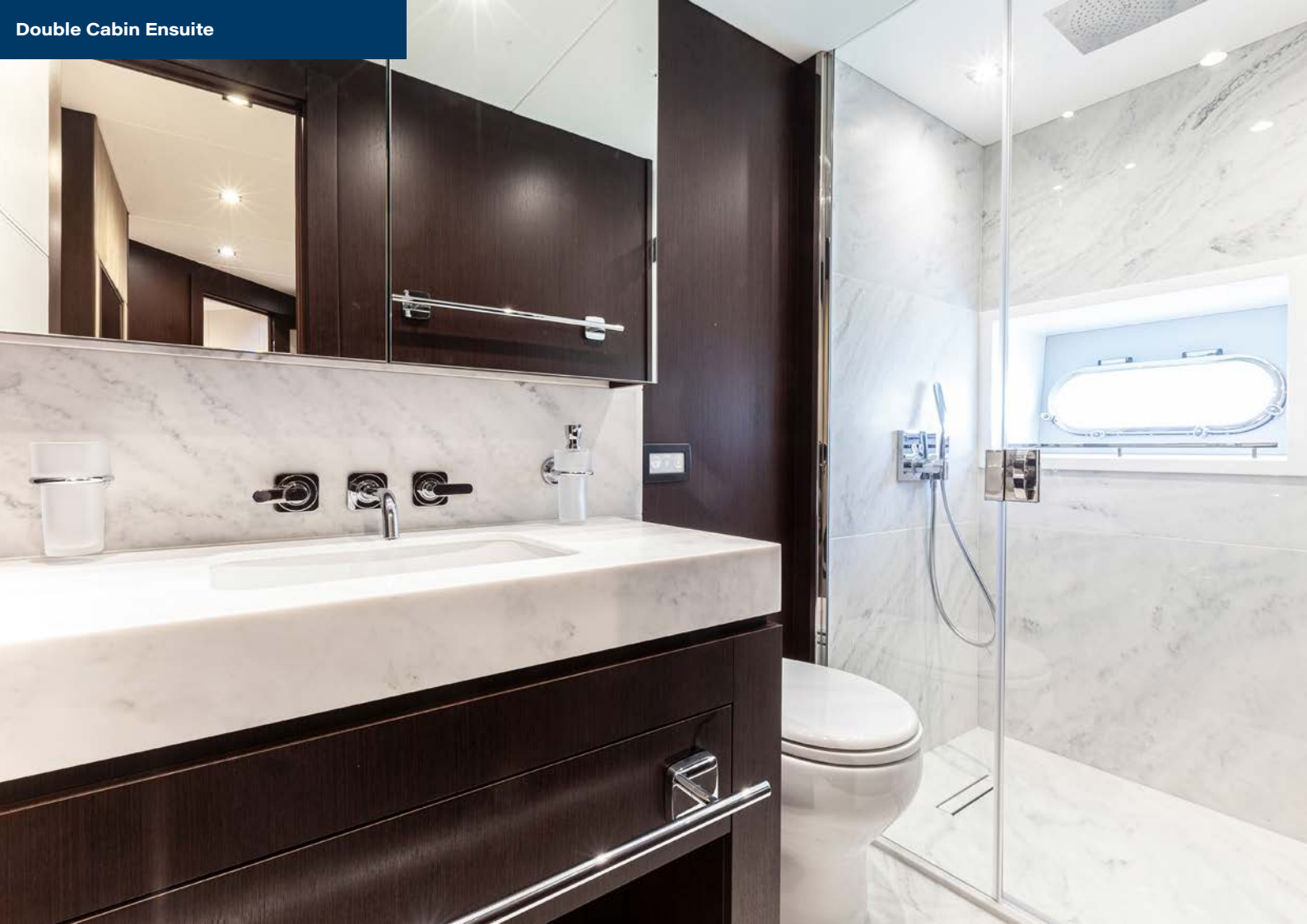








Double Cabin Ensuite



Double Cabin





Convertible Cabin Ensuite



Convertible Cabin

